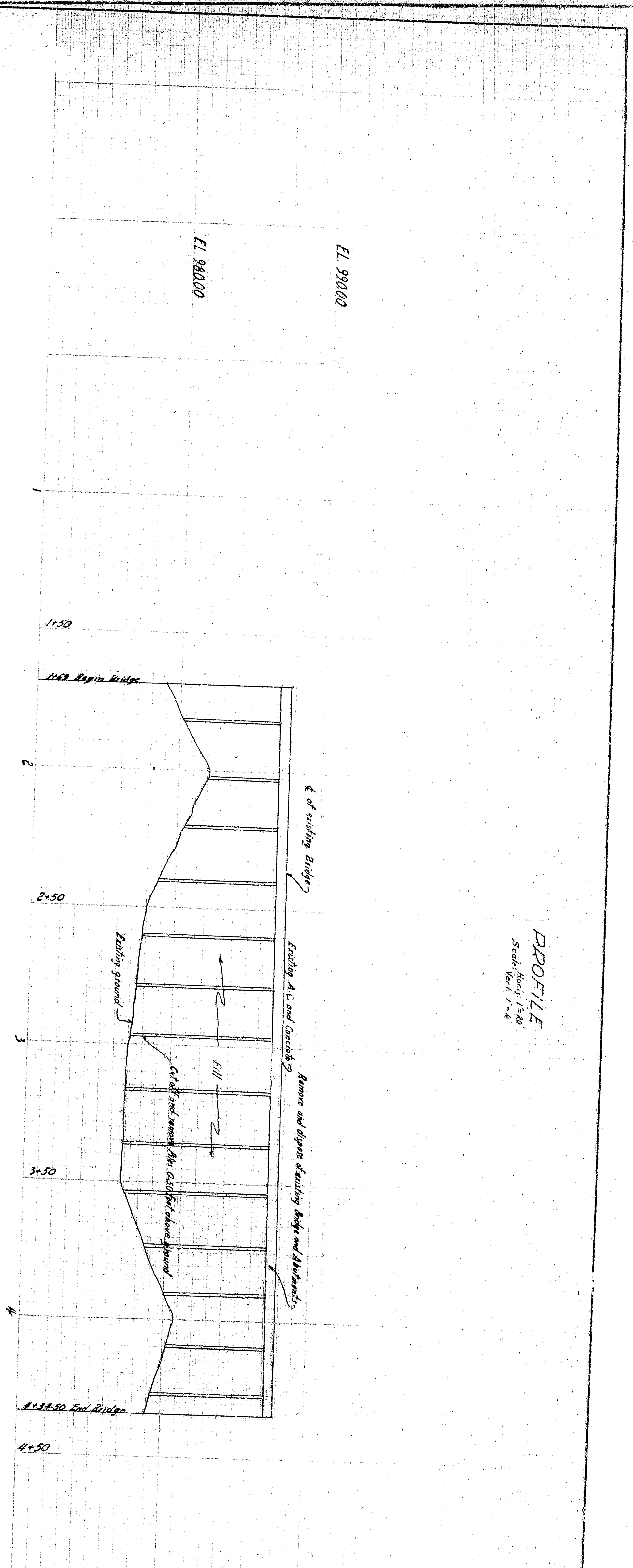
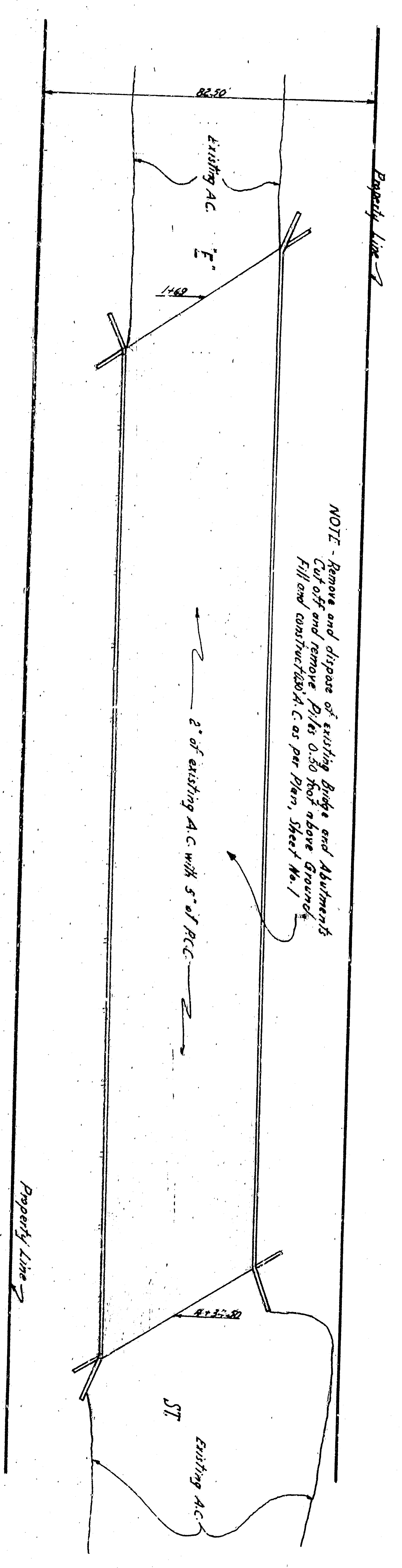


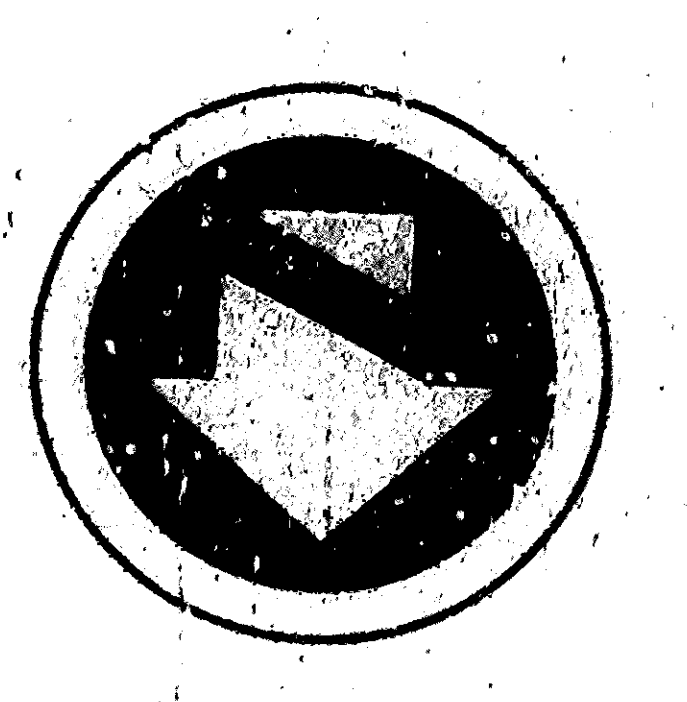
PROFILE
 Horiz. 1"=40'
 Vert. 1"=4'



- GENERAL NOTES**
1. All work indicated on these sheets shall be done in accordance with applicable provisions of Standard Specifications for Highway Construction, 1983 Edition, published by the State of California, Department of Transportation, and the City of San Bernardino.
 2. All materials (from spec or list) as directed by Engineer.
 3. If removed under this contract.
 4. If removed and retained under this contract, existing on site items shall be covered with tarpaulin and shall be removed to the site of disposal as directed by the Engineer.
 5. If the removed or retained by other.
 6. When the contractor includes concrete for the finishing and applying work, one and a half inches in the period previous to construction, the finishing and applying work shall be included in the price and shall be removed from the site of disposal as directed by the Engineer.
 7. S.M. Gene of Right also meet EL 9825.0 S.T.



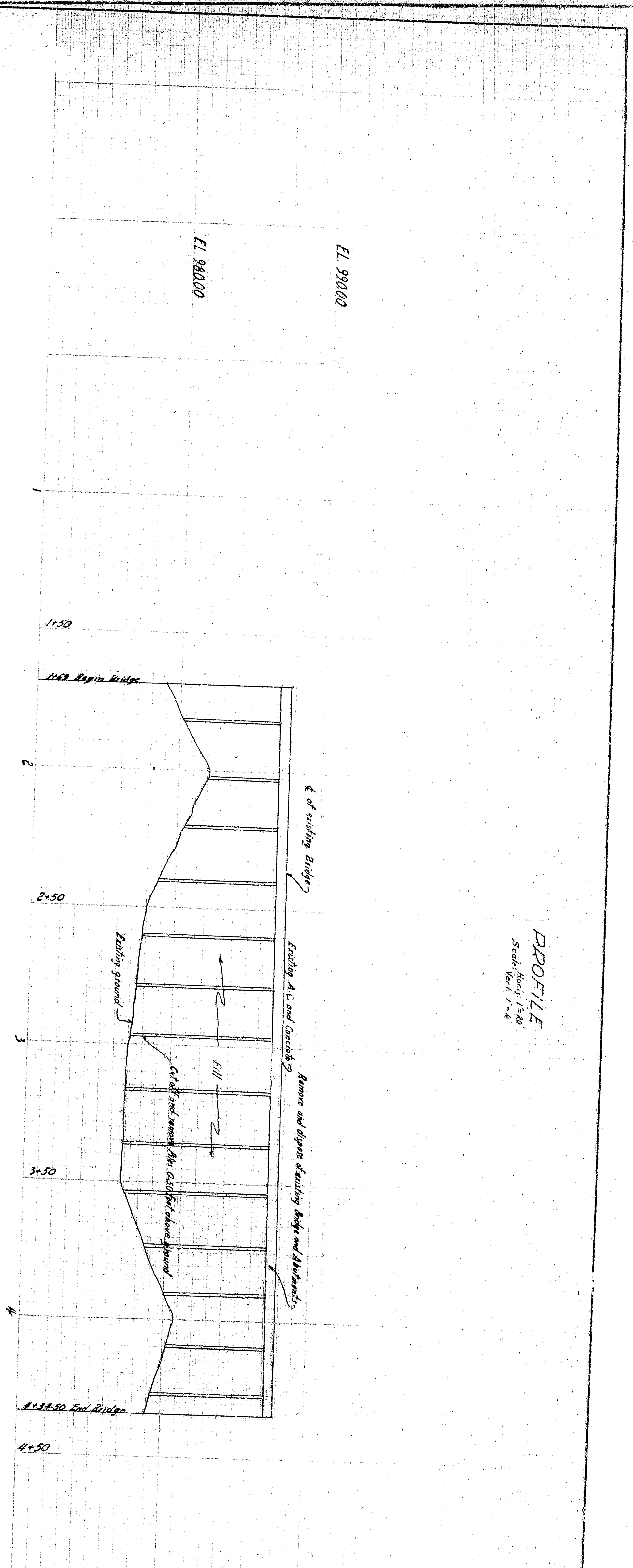
NOTE - Remove and dispose of existing bridge and abutments. Cut off and remove. Pile 0.50 feet above ground. Fill and construct A.C. as per Plan, Sheet No. 1.



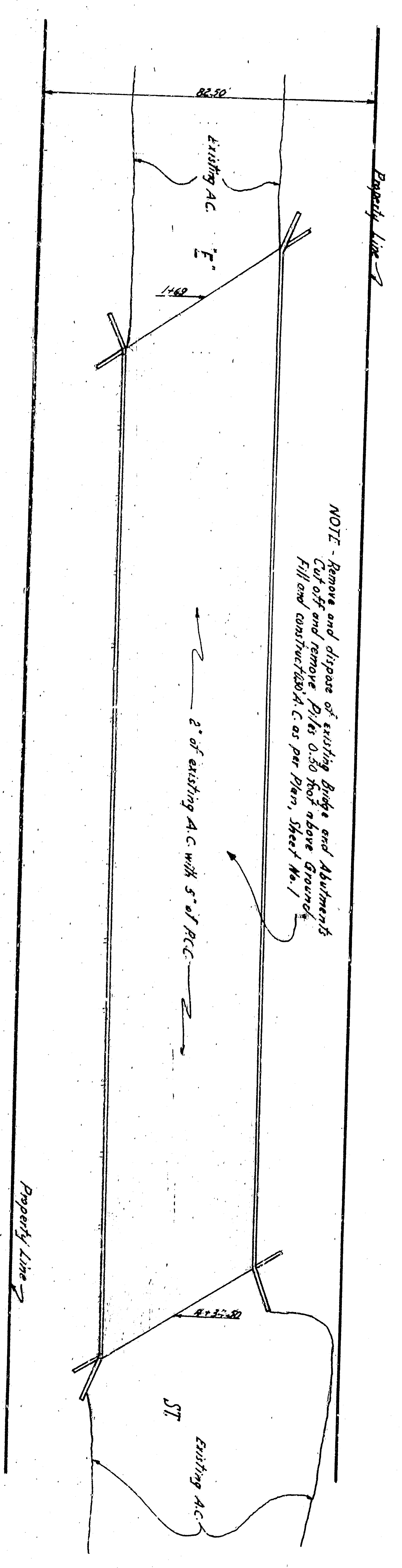
Scale 1"=20'

APPROVED	3-2-8	1983
DRAWING NO.	3200	
CITY ENGINEER	DRAWN BY	
CHECKED BY		
SHEET 3 OF 4		
SHEETS RECOMMENDED	18	
DEPARTMENT OF ENGINEERS CITY OF SAN BERNARDINO SOUTH E STREET Bridge Removal		

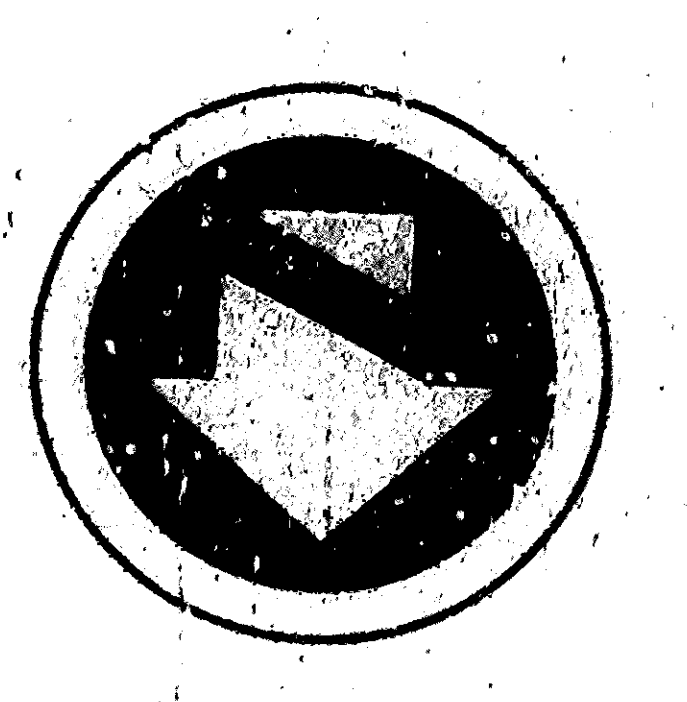
PROFILE
 Horiz. 1"=40'
 Vert. 1"=4'



- GENERAL NOTES
1. All work indicated on these sheets shall be done in accordance with applicable provisions of Standard Specifications for Highway Construction, 1983 Edition, published by the State of California, Department of Transportation, and the City of San Bernardino.
 2. All work shall be done in accordance with the City of San Bernardino Specifications for Bridge Construction.
 3. All work shall be done in accordance with the City of San Bernardino Specifications for Bridge Construction.
 4. All work shall be done in accordance with the City of San Bernardino Specifications for Bridge Construction.
 5. All work shall be done in accordance with the City of San Bernardino Specifications for Bridge Construction.



NOTE - Remove and dispose of existing bridge and abutments. Cut off and remove. Pile 0.50 feet above ground. Fill and construct A.C. as per Plan, Sheet No. 1.



Scale 1"=20'

APPROVED	3-2-8	1983
DRAWING NO.	3200	
CITY ENGINEER	DRAWN BY	
CHECKED BY		
SHEET 3 OF 4		
SHEETS RECOMMENDED		

DEPARTMENT OF ENGINEERS
 CITY OF SAN BERNARDINO
 SOUTH E STREET
 Bridge Removal